



a Professional Learning Community
Ensure That All Students Learn A Culture of Collaboration Focus on Results

PERKINS CORE INDICATOR PERFORMANCE STANDARDS GRADUATION RATE

Students who enroll at Prosser in a career and technical education course prepare for their post high school plans, regardless if their plans include enrolling in a post secondary institution or entry in to the skilled work force. Career and technical education is critical to the future of Indiana's economy and preparation of an educated and skilled workforce. Career and technical education is integral to the success of integrating academics and career preparation and providing essential skills and technical proficiencies needed for any post secondary plan.

The Dashboard Report, published annually by the Department of Workforce Development, includes data pertinent to students enrolled at Prosser Career Education Center. Analyzing the performance data drives instruction to ensure all students the skills for continued education and for career readiness.

- Page 3 **Enrollment trend**
 - The CTE enrollment in District 45 decreased slightly from the 2010:2011 school year.
- Male/Female enrollment**
 - Female student enrollment in District 45 CTB programs has remained marginally less than male enrollment the past three years.
- Free/Reduced Participation**
 - Free/Reduced student participation significantly decreased in 2011-2012.
- Special Populations Participation**
 - The special populations participation-in 2011-2012 increased only by eight students from 2010-2011.
- Page 5 **Graduation Rates-CTE Students vs. AU graduates**
 - In 2011-2012, the overall CTE state graduation rate (94.32%) exceeded the overall statewide high school graduation (86.45) rate by 7.87%.
 - District 45 graduation rate (93.53%) exceeded the statewide high school graduation rate.
 - Prosser's 2011-2012 graduation rate (94;9%) exceeded the overall CTE graduate rate, the overall statewide high school graduation rate, and the complete District 45 graduation rate.
- Pages 6-7 **Identification/Description of the student performance indicators**
- Page 8 **Multiple year Core Indicator Results**
 - e During 2011-2012, District 45 did not meet core indicators ISI, IS2, and 2S1, necessitating the implementation of an improvement plan during the 2012-2013 school year. In April, 2013, Prosser faculty initiated instructional strategies that addressed students' English and writing skills as well as students' math skills as part of the improvement plan and continued those instructional strategies during 2013-2014 school year.

- During 2011-2012, District 45 significantly surpassed the agreed upon levels of performance of the other nine core indicators. The most noteworthy evidences of surpassing the local agreed upon levels of performance included the core indicators relevant to continued education and career readiness: post-secondary enrollment (2X); industry certification/licensing (4X); and dual credit (5X).
 - During 2011-2012, District 45 substantially raised performance of the two core indicators not met during 2010-2011, non-traditional completion (6S2) and post-secondary enrollment (2X).
- Page 9 **Disaggregated Core indicator results**
 - **Gender**
Female students performed at a higher level than male students of seven of the eight reported core indicators. The only core indicator that males outscored female students was non-traditional participation (6S1).
 - **Ethnicity**
The core indicator performance results illustrate the white-not Hispanic student population performed at a higher level than the majority of the other ethnicity groups in four of the eight performance areas. The white-not Hispanic student population performed at a higher level than African American student population in five of the eight performance areas.
- Pages 18-20 **Student performance results within each of Prosser's programs**
The chart on pages 18-20 illustrates the performance results of students in each of Prosser programs.
 - 1S1-Students in five programs performed at a higher level than the local agreed upon level of performance. Students in ten programs scored higher than the performance level at which the complete district scored.
 - 1S2-Students in four programs performed at a higher level than the local agreed upon level of performance. Students in seven programs scored higher than the performance level at which the complete district scored.
 - 2S1-Students in ten programs performed at a higher level than the local agreed upon level of performance. Students in twelve programs scored higher than the performance level at which the complete district scored.
 - 3S1-Students in all but one programs performed at a higher level than the local agreed upon level of performance and the performance level at which the complete district scored.
 - 4S1-Students in 17 programs performed at a higher level than the local agreed upon level of performance and the performance level at which the complete district scored.
 - 5S1-Students in 15 programs performed at a higher level than the local agreed upon level of performance and the performance level at which the complete district scored.
 - 6S 1 –Students in 17 programs performed at a higher level than the local agreed upon level of performance and the performance level at which the complete district scored.

Prosser administration, faculty, and staff will continue and/or implement programs and strategies to increase the students' graduation rate and to increase the level of performance on all core indicators.

- Effectively engage in practices vital to a Professional Learning Community
- Continue key practices for improvement in student achievement, based on the Tech Centers that Work framework for school improvement
- Strengthen integration of Indiana Academic Math and English standards within the Career and Technical programs and Indiana's Common Core Standards
- 6 Instruct ECA preparation
- Utilize
- Review with new Prosser teachers Indiana's graduation requirements and review with them the components of a student's high school transcript
- Increase communication and collaboration with students' home schools
- Complete and share information with teachers and parents about the percentage of graduates who enter college and must take remedial courses.
- 6 Invite employers to discuss with teachers and parents the qualifications of high school graduates applying for jobs, both in terms of academic skills and technical competence.
- Increase students' work-based learning experiences, including but not limited to:
 - 6 Students' participation in job shadowing experience
 - o All first-year students will participate in a job shadowing experience. The following chart illustrates student participation in 2012-2013, thus illustrating areas of anticipated growth.

Student Participation in Job Shadowing 2012-2013

Aircraft Operations	33/37	90%
Architectural Drafting	15/21	70%
Auto Collision	13/26	50%
Auto Tech	35/42	80%
Computer Programming	13/19	70%
Construction Operators	16/16	100%
Construction Technology	20/20	100%
Cosmetology	94/94	100%
Criminal Justice	45/56	80%
Culinary Arts	41/55	75%
Diesel Technology	28/28	100%
Electrical Technology	16/21	75%
EMT	11 /11	100%
Entrepreneurship	15/15	100%
Fire/Rescue	20/20	100%
Health Science	105/131	80%
Horticulture	4/12	30%
HVAC	0/12	0%
Interactive Media	15/20	75%
Networking	25/41	60%
Precision Machines	20/22	90%
Welding	15/22	70%

- Students' participation in extended lab experiences

During the 2012-2013 school year, 54 students in 10 programs participated in an extended lab experience, expanding their familiarity of the specific career area and gaining valuable knowledge of the expectations within that field.

Student Participation in Extended Lab in 2012-2013

Auto Collision = 8 students	Electricity = 6 students
Auto Tech = 5 students	Horticulture = 5 students
Comp Networking= 2 students	HVAC = 3 students
Construction Equip = 4 students	Precision Machine = 7 students
Diesel Tech = 7 students	Welding = 7 students

As illustrated, not all programs actively participate in the extended lab experience. During the past five years, approximately 12% of Prosser's seniors, excluding health sciences students, participated in the extended lab experience.

2008-2009	76/485	16%	94 HS students	(579)
2009-2010	56/475	12%	86 HS students	(561)
2010-2011	53/512	10%	98 HS students	(610)
2011-2012	54/502	11%	91 HS students	(593)
2012-2013	54/474	11%	94 HS students	(568)
2013-2014	NA/484	NA	103 HS students	(587)

In addition to the students of the above-listed programs participating in an extended lab experience during the 2012-2013 school year, all 94 students enrolled in the second-year program of Health Sciences participated at a local long-term care facility in a 75-hour clinical experience as part of their training to earn their Certified Nursing Assistant certificate. These 94 students also participated in an extended lab experience in a local hospital, medical office, or other health sciences related facility.

Students' participation in mock interviews

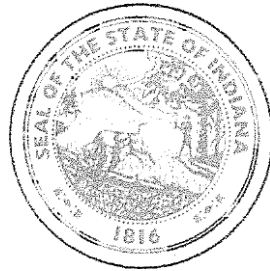
Prosser hosted its second annual mock interview event in May, 2013, utilizing the professional services of over 50 human resource personnel from the local business and industry community.

The HR representatives interviewed 160 seniors from various programs, and the students received immediate feedback regarding their interview skills. Each interview resembled a real interview as closely as possible, and the students received valuable experience as a job candidate and learned what is expected in all aspects of the interview process. Following the interview, the professional interviewer provided the student constructive feedback to improve his/her self-presentation skills.

Prosser's faculty and staff anticipate that all seniors in each program will participate in a mock interview event during the 2013-2014 school year.



Prosser Career Education Center ensures each student the skills for continued education and for career readiness.



INDIANA
WORKFORCE
DEVELOPMENT
AND ITS **WorkOne**.CENTERS

STATE OF INDIANA
DEPARTMENT OF WORKFORCE DEVELOPMENT
INDIANA COMMISSION FOR CAREER AND TECHNICAL EDUCATION
2011-2012 CTE DASHBOARD REPORT
AREA CAREER AND TECHNICAL EDUCATION DISTRICT 45

Area District #45 Prosser Career Education Center



**AREA CAREER AND TECHNICAL EDUCATION
 Area District #45 - Prosser Career Education Center**

Top Ten Hoosier Hot Jobs for the Region¹

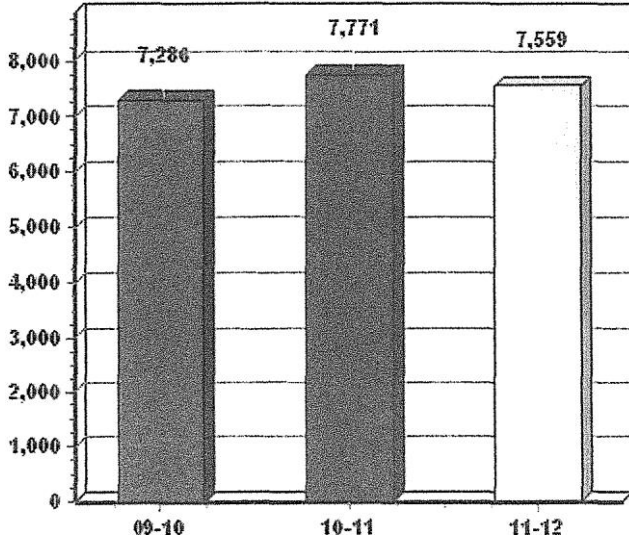
<u>Occupation</u>	<u>CIP Code and CTE Program</u>	<u>Average Wage</u>
1 TRUCK AND BUS DRIVER/COMMERCIAL	Bus Drivers, Transit and Intercity	\$33,272
2 ELEMENTARY EDUCATION AND TEACHER	Elementary School Teachers, Except Special Ed	\$45,200
3 NURSING (R.N. TRAINING)	Registered Nurses	\$50,100
4 JUNIOR HIGH/INTERMEDIATE/JUNIOR	Middle School Teachers, Except Special and Vocational	\$43,610
5 WELDING TECHNOLOGY/LEVEL 2	Welders, Cutters, Solderers, and Brazers	\$30,450
6 BUILDING/CONSTRUCTION SITE MANAGEMENT/MANAGER	First-Line Supervisors/Managers of Construction Trades and Related Occupations	\$31,953
7 PUBLIC ADMINISTRATION	Emergency Management Specialists	\$76,864
8 OPERATIONS MANAGEMENT AND SUPERVISOR	Business Teachers, Postsecondary	\$43,940
9 SALES, DISTRIBUTION AND MARKETING	Sales Representatives, Wholesale and Manufacturing, Except Parts and Accessories	\$43,526
10 CONSTRUCTION/HEAVY EQUIPMENT/OPERATOR	Paving, Surfacing, and Tamping Equipment Operators	\$37,289

1. Data received from 2006-2016 Long Term Indiana Occupational Projections- Top 10 openings with at least a \$29,000 wage.

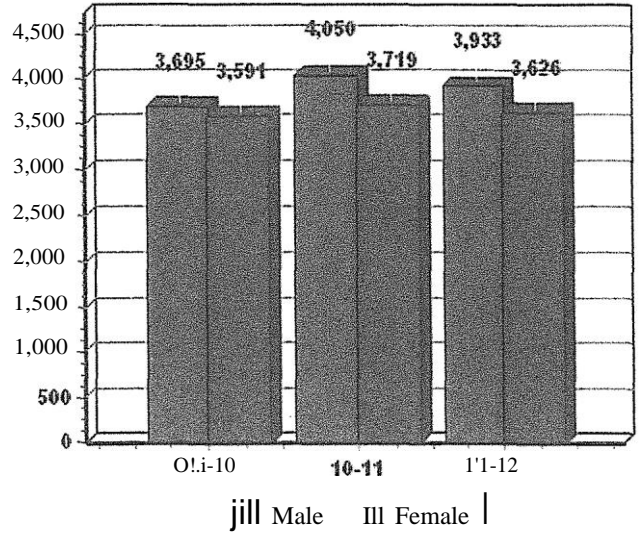


Enrollments and Demographics

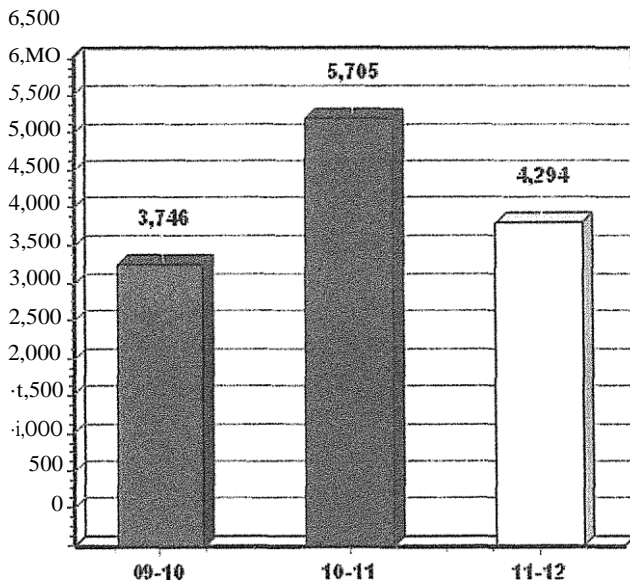
Enrollments By Year



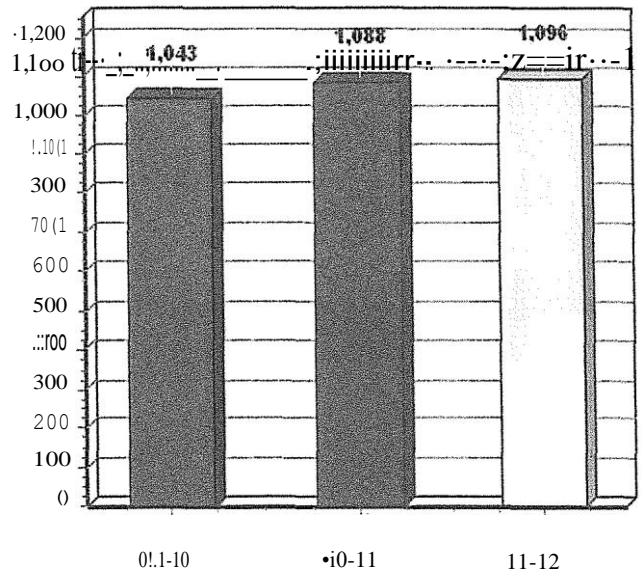
Gender Trends



Free/Reduced Participation By Year



Special Populations Participation by Year





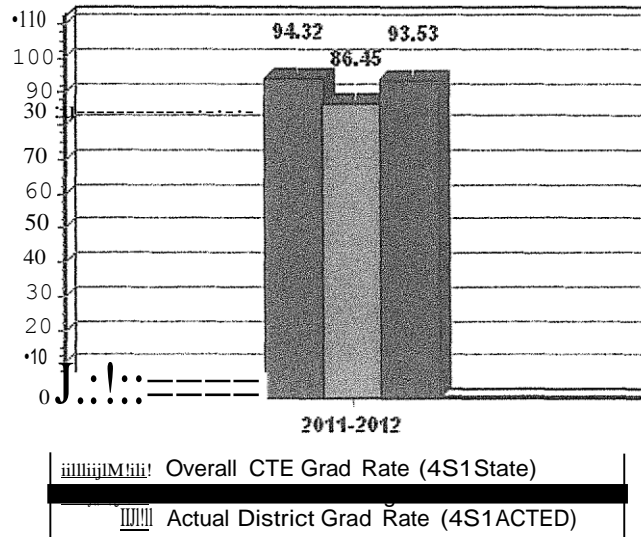
Conducting vs Home Enrollment

10	SchoolName	School	Home
1000	CLARKSVILLE COM SCHOOL CORP	145	190
1300	CRAWFORD CO COM SCHOOL CORP	402	437
8215	EAST WASHINGTON SCHOOL CORP	256	295
1010	GREATER CLARK COUNTY SCHOOLS	1,468	1,648
3160	LANESVILLE COMMUNITY SCHOOL CO	85	128
2400	NEW ALBANY-FLOYD CO CON SCH	2,531	1,648
3180	NORTH HARRISON COM SCHOOL CORP	563	616
9875	ROCK CREEK ACADEMY-CORP	0	14
8205	SALEM COMMUNITY SCHOOLS	544	586
7230	SCOTT COUNTY SCHOOL DISTRICT 1	140	167
7255	SCOTT COUNTY SCHOOL DISTRICT 2	440	500
3190	SOUTH HARRISON COM SCHOOLS	421	584
0940	WEST CLARK COMMUNITY SCHOOLS	564	746
Total		7,559	7,559

² Data received from InTERS and DOE



Graduation Rates-CTE Students v:s. All graduates²



² Data received from InTERS and DOE



2011-2012 CTE DASHBOARD REPORT: DISTRICT 45

INDIANA DEPARTMENT OF WORKFORCE DEVELOPMENT

Indiana Career and Technical Education Student Performance Indicators-Secondary

CTE Student Performance Indicators	Indicator Description
1S1 Academic Achievement in Reading/Lang Arts	Number of CTE concentrators who have passed the English/ Language Arts portion of the Graduation Qualifying Exam (GQE)
1S2 Academic Achievement in Mathematics	Number of CTE concentrators who have passed the Mathematics portion of the Graduation Qualifying Exam (GQE)
2S1 Technical Skill Attainment	Number of CTE concentrators and completers who passed state-approved technical skill assessments defined for Indiana Career Pathways.
3S1 School Completion	Number of CTE concentrators who earned a regular secondary school diploma.
4S1 Student Graduation Rate	Number of CTE concentrators who were included as graduates in the state' s calculation.
5S1 Placement	Number of CTE concentrators who left secondary education and were placed in postsecondary education or advanced training, military service or employment in second quarter after leaving secondary education.
6S1 Nontraditional Participation	Number of CTE participants from underrepresented gender groups who participated in a program leading to employment in nontraditional fields.
6S2 Nontraditional Completion	Number of CTE completers from underrepresented gender groups who participated in a program leading to employment in nontraditional fields.



2011-2012 CTE DASHBOARD REPORT DISTRICT45
 INDIANA DEPARTMENT OF WORKFORCE DEVELOPMENT

Additional CTE
 Student Performance
 Indicators

Indicator Description

1EXT Enrollment in Programs/Pathways Number of CTE concentrators who enrolled in one or more courses in a CTE program or Indiana College and Career Pathway.

2EXT Postsecondary Enrollment Number of CTE concentrators who graduated last year and are enrolled in postsecondary during the current year.

3EXT Cluster Match Number of CTE concentrators who graduated last year and are enrolled in postsecondary during the current year in the same major or career cluster/pathway as they were in high school.

4EXT Industry Certification/ Licensing Number of CTE concentrators students who graduated last year with a state or industry-recognized certificate, license or credential.

5EXT Dual Credits Number of CTE concentrators who graduated last year with transcribed postsecondary credits (dual credits).

6EXT Remediation Number of CTE concentrators who graduated last year and who enrolled in postsecondary remedial mathematics, writing, or reading courses upon entering postsecondary education.

Completion Rate Number of CTE concentrators enrolled in CTE in one of the last four years who also completed a program during those four years.

181/LT Number of CTE concentrators who failed language arts in 10th grade and passed in a subsequent year.

182/LT Number of CTE concentrators who failed math in 10th grade and passed in a subsequent year.

Term

Secondary Concentrator and Participant Definitions

CTE Completer: A CTE Completer is a CTE Concentrator who has taken the state-specified pathway assessment in a state approved College and Career Pathway (revised January 2012).

CTE Concentrator: A CTE Concentrator is an Indiana student who has earned at least six (6) credits in CTE pathway courses in a state approved College and Career Pathway (revised January 2012).



2011-2012 CTE DASHBOARD REPORT: DISTRICT 45
 INDIANA DEPARTMENT OF WORKFORCE DEVELOPMENT

Multiple Year Core Indicator Results

Core Indicator	09-10	Local AUL 09-10	ACTED 09-10	10-11	Local AUL 10-11			AUL	ACTED	AUL 12R13	Local AUL 12-13
1S1 Academic Achievement Lang	69.00%	69.00%		72.00%	66.00%	68.17%	75.00%	68.59%		63.00%	55.58%
1S2 Academic Achievement Math	67.00%	67.00%		70.67%	65.00%	73.15%	73.00%	67.33%		68.50%	58.50%
2S1 Technical Skill Attainment	80.00%	88.50%	99.46%	83.00%	91.50%	100.00%	85.50%	94.00%		85.00%	93.50%
3S1 Completion	89.25%	84.21%	97.52%	90.50%	85.46%	95.90%	91.25%	86.21%	99.03%	92.00%	86.96%
4S1 Graduation (NCLB)	90.67%	90.67%	87.57%	92.00%	88.57%	91.95%	93.00%	89.72%	93.53%	94.00%	90.87%
5S1 Placement	75.00%	74.42%	75.17%	77.78%	77.20%	88.28%	80.00%	79.70%	86.04%	82.53%	82.20%
6S1 Non-Trad Participation	11.00%	9.25%	31.06%	20.00%	18.00%	30.55%	30.00%	25.33%	34.12%	35.00%	32.66%
6S2 Non-Trad Completion	13.00%	8.43%	16.67%	22.67%	18.10%		31.00%	19.20%	21.14%	39.00%	20.30%
2X Post Secondary Enrollment	N/A	N/A	40.84%	N/A	38.58%		0.00%	39.58%	57.52%	N/A	40.58%
3X Cluster Match	N/A	N/A	7.17%	N/A	13.46%	16.75%	0.00%	14.46%	17.00%	N/A	15.46%
4X Industry Cert./ Licensing	N/A	N/A	3.46%	N/A	2.83%	11.68%	0.00%	3.83%	23.22%	N/A	4.83%
5X Dual Credit	N/A	N/A	5.83%	N/A	4.44%	30.01%	0.00%	5.44%	39.04%	N/A	6.44%
6X Remediation	N/A	N/A	23.66%	N/A	23.31%	23.17%	0.00%	22.31%		N/A	21.31%
7X COMPLETION RATE	N/A	N/A	28.23%	N/A	30.85%	72.50%	N/A	31.85%	70.22%	N/A	32.85%
8X Academic Achievement Lang	N/A	N/A	82.53%	N/A	82.78%		N/A	83.78%	72.71%	N/A	84.78%
9X Academic Achievement Math /	N/A	N/A	76.17%	N/A	76.42%	76.50%	N/A	77.42%		N/A	78.42%

NEED AN IMPROVEMENT PLAN

NEED AN IMPROVEMENT PLAN (year 2)

NEED AN IMPROVEMENT PLAN (year 3)



Disaggregated Core Indicator Results

Disaggregate	1S1	1S2	2S1		4S1	5S1	6S1	6S2
	Academic Achievement New-Lang Arts	Academic Achievement New-Mat	Technical Attainment		Graduation	Post Graduate Follow	Non-Trad Participation	Non-Trad Completio
Overall Total	54.58%	57.50%	79.77%	99.03%	93.53%	86.04%	34.12%	21.14%
Male	49.90%	56.28%	68.88%	98.57%	92.49%	83.75%	38.02%	1.53%
Female	61.40%	59.27%	93.65%	99.70%	95.03%	89.07%	29.28%	79.55%
African American	31.58%	36.84%	91.30%	95.12%	97.30%	75%	41.48%	0%
American Indian	75%	50%	100%	100%	100%	-	63.08%	0%
Hispanic, Not African American	40%	55%	77.78%	100%	90.91%	68.75%	35%	28.57%
Asian or Pacific Islander	100%	66.67%	-	100%	100%	66.67%	50%	50%
Hawaiian	-	-	-	-	-	100%		
White- Not Hispanic	56.17%	59.22%	79.08%	99.18%	93.47%	86.95%	32.65%	21.98%
Multi-Race or Other	45.45%	38.10%	80%	100%	88.89%	89.47%	37.23%	0%
Disabled	21.53%	22.92%	61.43%	97.96%	84.51%	80.26%	33.50%	13.24%
Economically Disadvantaged	52.67%	55.19%	79.82%	99.84%	93.85%	85.90%	34.69%	16.33%
Non Traditional	67.50%	67.50%	100%	100%	92.31%	78.43%	100%	100%
Single Parent	75%	100%	100%	100%	50%	81.08%	44.44%	0%
Displaced Homemaker	50%	100%	-	100%	100%	86.96%	50%	
Other Educational Barrier	51.43%	56.52%	78.05%	98.63%	94.20%	87.37%	20.34%	15.79%
Limited Eng Proficiency	-	--	-	-	-	100%		



20112012 Final Student Indicator Results by School

School	Academic				(NCLB)	5S1	651	Non-Trad Completion
	Achievement New-Lang	Achievement New-Math	Skills Attainment		Follow Up	Participation		
State Agreed Upon Level	75.00%	73.00%	85.50%	91.25%	93.00%	80.00%	30.00%	31.00%
AUSTIN HIGH SCHOOL	-	-	-	-	-	100%	55.81%	
CHARLESTOWN SENIOR HIGH SCH	46.15%	46.15%	100%	97.10%	83.33%	60%	5.31%	5.61%
CLARKSVILLE SENIOR HIGH SCH	--	-	-	0%	-	100%		
CORYDON CENTRAL HIGH SCHOOL	61.54%	76.92%	-	100%	83.33%	83.33%	33.52%	
CRAWFORD COUNTY JR-SR HS	33.33%	50%	-	100%	83.33%	87.50%	43.66%	
EASTERN HIGH SCH	62.07%	77.19%	100%	98.31%	94.64%	100%	40.27%	40.27%
FLOYD CENTRAL JR-SR HIGH SCH	83.33%	80.56%	100%	100%	96.55%	91.21%	22.22%	
HENRYVILLE JR & SR HIGH SCH	0%	0%	-	100%	100%	50%	39.51%	
JEFFERSONVILLE HIGH SCHOOL	47.37%	57.89%	100%	95.24%	93.10%	100%	44.52%	



20112012 CTE DASHBOARD REPORT : DISTRICT
 INDIANA DEPARTMENT OF WORKFORCE DEVELOPMENT

2011Q2012 Final Student Indicator Results by School

School							652 Non"Trad	
	Arts							
LANESVILLE JR-SR HS	100%	80%	100%	100%	-	100%	36.36%	
NEW ALBANY SENIOR HIGH SCHOOL	50%	50%	-	100%	0%	70%	48.88%	
NEW WASHINGTON HIGH SCHOOL	-	-	-	-	-	0%	28.21%	
NORTH HARRISON HIGH SCHOOL	-	-	-	-	-	-	29%	
PROSSER CAREER EDUCATION CENTER	52.43%	54.05%	77.69%	99.64%	94.92%	88.32%	7.08%	8.51%
SALEM HIGH SCHOOL	100%	100%	-	100%	100%	100%	30.85%	
SCOTISBURG SENIOR HIGH SCHOOL	33.33%	0%	100%	100%	100%	100%	44.89%	
SILVER CREEK HIGH SCHOOL	72.73%	72.73%	-	100%	91.67%	94.12%	37.84%	
SOUTH CENTRAL JR & SR HS	0%	0%	-	100%	100%	-	47.27%	
WILLIAM W BORDEN HIGH SCHOOL	76.92%	92.31%	100%	100%	100%	100%	0%	



2011'2012 CTE DASHBOARD REPORT : DISTRICT 45
 INDIANA DEPARTMENT OF WORKFORCE DEVELOPMENT

2011w2012 final Student Indicator Results by Program

DOE Code Number	DOE Code Name	1S1 Academic Achievement New-Lang Arts	1S2 Academic Achievement New-Math	2S1 Technical Skills Attainment	3S1 Completion	4S1 Graduation (NCLB)	5S1 Post Graduate Follow Up	6S1 Non-Trad Participation	6S2 Non"Trad Completion
STATE AGREED UPON LEVEL									
		75.00%	73.00%	85.50%	91.25%	93.00%	80.00%	30.00%	31.00%
AUSTIN HIGH SCHOOL									
5342	Nutrition and Wellness	-	-	-	-	-	100%	55.81%	
CHARLESTOWN SENIOR HIGH SCH									
4812	(PLT1\1) Introduction to Engineering Des	33.33%	33.33%	-	100%	100%			
5330	Adult Roles and Responsibilities	60%	60%	-	100%	83.33%	85.71%		
5510	Automotive Services Technology I	28%	28%	-	92.59%	74.07%	62.96%	0%	0%
5240	Business Technology Lab I	25%	25%	-	100%	100%			
5244	Business Technology Lab II	100%	50%	-	100%	100%			
5362	Child Development	50%	25%	-	100%	100%			
5364	Interpersonal Relationships	0%	0%	--	100%	50%			
5234	Network Fundamentals	80%	100%	100%	100%	83.33%	50%	0%	0%
5342	Nutrition and Wellness	0%	0%	-	100%	50%	-	18.18%	18.18%
4814	Principles of Engineering PLTW	70%	80%	-	100%	90.91%	30.77%	6.06%	6.67%
5986	Radio and Television I	60%	60%	-	100%	100%	80%		



2011-2012 CTI:E DASHBOARD REPORT : DISTRICT 45
 INDIANA DEPARTMENT OF WORKFORCE DEVELOPMENT

011"2012 Final Student Indicator Results by Program

DOE Code Number	DOE .Code Name	182					5S1 Post Graduate Follow Up	6S1 Non-Trad Participation	6S2 Non-Trad Completion
		Lang	New-Math	Skills Attainment	(NCLB)	Arts			
CLARKSVILLE SENIOR HIGH SCH									
5342	Nutrition and Wellness	-	-	-	-	-	100%		
5984	Sports and Entertainment Marketing	-	-	-	0%				
CORYDON CENTRAL HIGH SCHOOL									
4812	(PLTW) Introduction to Engineering Des	50%	50%	-	100%	100%	100%		
5002	Agribusiness Management	71.43%	85.71%	-	100%	-	0%		
5008	Animal Sciences	0%	0%	-	100%	0%	100%		
5362	Child Development	-	-	-	-	-	100%		
5132	Horticultural Science	-	-	-	-	-	-	53.33%	
5056	Introduction to Agriculture, Food and N	50%	100%	-	100%	100%	-	26.67%	
5136	Landscape Management	-	-	-	-	-	100%	54.55%	
5180	Natural Resources	-	-	-	-	-	-	5.88%	
5342	Nutrition and Wellness	100%	100%	-	100%	100%	0%	30.23%	
4814	Principles of Engineering PLTW	-	-	-	-	-	-	55.56%	
CRAWFORD COUNTY JR..SR HS									
5008	Animal Sciences	-	-	-	-	-	0%	60.61%	



2011R2012 CTE DASHBOARD REPORT : DISTRICT 45
 INDIANA DEPARTMENT OF WORKFORCE DEVELOPMENT

2011-2012 final Student indicator Results by Program

DOE Code Number	DOE Code Name	1S1 Academic Achievement New-Lang Arts	1S2 Academic Achievement New-Math	2S1 Technical Skills Attainment	3S1 Completion	4S1 Graduation (NCLB)	5S1 Post Graduate Follow Up	6S1 Non-Trad Participation	6S2 Non-Trad Completo
CRAWFORD COUNTY JR R									
5580	Construction Technology I	25%	25%	-	100%	75%	-	13.79%	
5132	Horticultural Science	-	-	-	-	-	-	57.89%	
5366	Human Development and Family Welln	-	-	-	-	-	100%		
5342	Nutrition and Wellness	-	-	-	-	-	-	25%	
5776	Welding Technology I	50%	100%	-	100%	100%	100%		
5778	Welding Technology II	--	-	-	-	-	100%		
EASTERN HIGH SCH									
5002	Agribusiness Management	100%	100%	100%	100%				
5088	Agriculture Power, Structure and Techn	50%	100%	-	80%	80%			
5008	Animal Sciences	50%	57.14%	-	100%	100%	100%	43.48%	43.48%
5244	Business Technology Lab II	100%	100%	-	100%	100%			
5132	Horticultural Science	65%	84.21%	--	100%	89.47%	--	58.93%	58.93%
5056	Introduction to Agriculture, Food and N	-	-	-	-	-	-	34.78%	34.78%
5136	Landscape Management	63.64%	63.64%	100%	100%	100%	-	8.33%	8.33%



2011-2012 CTE DASHBOARD REPORT: DISTRICT

INDIANA DEPARTMENT OF WORKFORCE DEVELOPMENT

2011-2012 Final Student Indicator Results by Program

DOE Code Number	DOE Code Name	1S1 Academic Achievement New-Lang Arts	1S2 Academic Achievement New-Math	2S1 Technical Skills Attainment	3S1 Completion	4S1 Graduation (NCLB)	5S1 Post Graduate Follow Up	6S1 Non-Trad Participation	6S2 Non Trad Completion
EASTERN HIGH SCH									
5180	Natural Resources	66.67%	100%	-	100%	100%	-	30.43%	30.43%
5342	Nutrition and Wellness	-	-	-	-	-	100%		
FLOYD CENTRAL JR-SR HIGH SCH									
4826	(PLTW) Digital Electronics	100%	100%	-	100%	100%	100%		
4828	(PLTW) Engineering Design and Develo	-	-	-	-	-	100%		
4812	(PLTW) Introduction to Engineering Des	100%	100%	-	100%	100%	100%		
5362	Child Development	87.50%	87.50%	100%	100%	100%	100%		
5430	Consumer Service Careers I & II	100%	100%	-	100%	-	85%		
5350	Introduction to Housing and Interior Des	--	-	-	-	-	100%		
5342	Nutrition and Wellness	73.33%	66.67%	--	100%	93.33%	90.91%	28.26%	
4814	Principles of Engineering PLTW	--	-	-	-	-	-	5.88%	
5986	Radio and Television I	75%	75%	100%	100%	100%	85.71%		
HENRYVILLE JR & SR HIGH SCH									
5340	Advanced Nutrition and Wellness	0%	0%	-	100%	100%	0%	38.46%	
5342	Nutrition and Wellness	-	-	-	-	-	100%	40.48%	



2011-2012 CTE DASHBOARD REPORT : DISTRICT 45
 INDIANA DEPARTMENT OF WORKFORCE DEVELOPMENT

2011 2012 Final Student Indicator Besylts by Program

<u>Code</u>	Code Name	151	152	2S1	351	481	581	651	652
		Academic Achievement New-Lang Arts	Academic Achievement New-Math	Technical Skills Attainment	Completion	Graduation (NCLB)	Post Graduate Follow Up	Non-Trad Participation	Non-Trad Completio
JEFFERSONVILLE HIGH SCHOOL									
5340	Advanced Nutrition and Wellness	50%	100%	-	100%	100%	100%	41.46%	
5362	Child Development	-	-	-	-	-	100%		
5580	Construction Technology I	33.33%	66.67%	-	100%	100%	-	0%	
5364	Interpersonal Relationships	-	-	-	-	-	100%		
5380	Introduction to Fashion and Textiles	100%	100%	100%	100%				
5350	Introduction to Housing and Interior Des	-	-	-	-	-	100%		
5342	Nutrition and Wellness	50%	50%	-	100%	100%	100%	46.98%	
5394	Preparing for College and Careers	85.71%	100%	100%	100%				
5986	Radio and Television I	40%	20%	-	100%	100%			
5776	Welding Technology I	20%	33.33%	100%	89.47%	88.89%			
LANESVILLE JR..SR HS									
5074	Advanced Life Science: Plants and Soils	-	-	-	-	-	100%		
5132	Horticultural Science	-	-	-	-	-	-	57.14%	
5056	Introduction to Agriculture, Food and N	-	-	-	-	-	-	26.67%	



2011-2012 CTE DASHBOARD REPORT : DISTRICT 45
 INDIANA DEPARTMENT OF WORKFORCE DEVELOPMENT

2011-2012 Finsd Student Indicator Results by Program

DOE Code Number	DOE Code Name	1S1 Academic Achievement New-Lang Arts	1S2 Academic Achievement New-Math	2S1 Technical Skills Attainment	3S1 Completion	4S1 Graduation (NCLB)	5S1 Post Graduate Follow Up	6S1 Non-Trad Participation	6S2 Non-Trad Completion
LANESVILLE JR-SR HS									
5342	Nutrition and Wellness	100%	100%	100%	100%				
5394	Preparing for College and Careers	100%	0%	100%	100%				
NEW ALBANY SENIOR HIGH SCHOOL									
5360	Advanced Child Development	-	-	-	-	-	50%		
5340	Advanced Nutrition and Wellness	-	--	-	-	-	-	35.82%	
5592	Building and Facilities Management	-	-	-	-	--	33.33%		
5362	Child Development	100%	100%	-	100%	-	100%		
5350	Introduction to Housing and Interior Des	-	-	--	--	-	100%		
5342	Nutrition and Wellness	0%	0%	-	100%	0%	100%	52.44%	
5986	Radio and Television I	-	-	-	-	--	100%		
NEW WASHINGTON HIGH SCHOOL									
5330	Adult Roles and Responsibilities	-	-	-	-	-	0%		
5002	Agribusiness Management	-	-	-	-	-	-	7.69%	
5008	Animal Sciences	-	-	-	-	-	-	31.03%	
5056	Introduction to Agriculture, Food and N	-	-	-	-	-	-	33.33%	



2011-2012 CTE DASHBOARD REPORT: DISTRICT
 INDIANA DEPARTMENT OF WORKFORCE DEVELOPMENT

2011-2012 Final Student Indicator Results by Program

DOE Code	DOE Code Name	1S1 Academic Achievement New-Lang Arts	1S2 Academic Achievement New-Math	2S1 Technical Skills Attainment	3S1 Completor	4S1 Graduatio (NCLB)	5S1 Post Graduate Follow Up	6S1 Non-Trad Participator	6S2 Non-Trad Completor
NORTH HARRISON HIGH SCHOOL									
5008	Animal Sciences	-	-	-	-	-	-	37.50%	
5132	Horticultural Science	-	-	-	-	-	-	26.47%	
5056	Introduction to Agriculture, Food and N	-	-	-	-	-	-	9.68%	
5136	Landscape Management	-	-	-	-	-	-	11.11%	
5180	Natural Resources	-	-	-	-	-	-	33.33%	
5342	Nutrition and Wellness	-	-	-	-	-	-	28.57%	
PROSSER CAREER EDUCATION CENTER									
5346	Advanced Culinary Arts	62.50%	50%	100%	100%	88.89%	100%		
5640	Architectural Drafting and Design 1	92.31%	100%	8.33%	100%	100%			
5544	Automotive Collision Repair Technology	33.33%	66.67%	100%	100%	75%	58.33%		
5514	Automotive Collision Repair Technology	15%	50%	29.41%	100%	85.71%	66.67%	2.08%	0%
5510	Automotive Services Technology I	66.67%	83.33%	91.67%	100%	100%	92.31%	8.33%	10%
5546	Automotive Services Technology II	35.48%	32.26%	76.67%	100%	93.75%	96%		
5524	Aviation Flight	91.30%	86.96%	100%	100%	100%			



2011"2012 CTE DASHBOARD REPORT : DISTRICT 45
 INDIANA DEPARTMENT OF WORKFORCE DEVELOPMENT

2011-2012 Final Student Indicator Results by Program

DOE Code	DOE Code Name	151	1S2	251	3S1	4S1	5S1	6S1	652
Number		Academic Achievement New-Lang Arts	Academic Achievement New-Math	Technical Skills Attainment	Completion	Graduation (NCLB)	Post Graduate Follow Up	Non-Trad Participation	Non-Trad Completion
PROSSER CAREER EDUCATION CENTER									
5520	Aviation Maintenance	50%	66.67%	—	100%	100%	66.67%	20%	
5592	Building and Facilities Management	—	—	—	—	—	100%		
4534	Computer Programming I	—	—	—	—	—	100%		
5236	Computer Programming II	46.67%	46.67%	83.33%	100%	100%	100%		
5230	Computer Tech Support	33.33%	22.22%	100%	100%	90%	93.33%		
4830	Construction Technology Electrical I	55.56%	61.11%	11.11%	100%	94.74%	94.12%		
4832	Construction Technology Electrical II	0%	0%	—	100%	—	100%		
5496	Construction Technology HVAC I	—	—	—	—	—	100%		
5498	Construction Technology HVAC II	45.45%	45.45%	36.36%	100%	76.92%	91.67%		
5580	Construction Technology I	40.63%	50%	0%	96.97%	93.75%	—	8.54%	0%
5802	Cosmetology I	28.57%	14.29%	—	100%	87.50%	76.92%	1.35%	
5806	Cosmetology II	63.64%	54.55%	100%	100%	91.18%			
5822	Criminal Justice I	69.23%	46.15%	—	100%	100%			
5440	Culinary Arts and Hospitality Managem	16.67%	16.67%	—	100%	100%	50%		



2011-2012 CTE DASHBOARD REPORT: DISTRICT 45
 INDIANA DEPARTMENT OF WORKFORCE DEVELOPMENT

2011-2012 Final Student Indicator Results by Program

DOE Code Number	DOE Code Name	1S1	2S1		3S1	Graduation	Graduate Follow Up	6S1	6S2
			New-Math	Attainment				Non-Trad Participation	Non-Trad Completion
PROSSER CAREER EDUCATION CENTER									
		Arts							
5620	Diesel Service Technology I	0%	25%	-	100%	100%	100%	12%	33.33%
5624	Diesel Service Technology II	26.32%	42.11%	100%	100%	94.74%	66.67%		
5572	Graphic Imaging Technology	100%	0%	-	100%	66.67%	60%		
5282	Health Science Education I	58.82%	61.34%	100%	99.18%	98.35%	100%		
5232	Interactive Media	78.57%	57.14%	-	100%	100%	84.62%		
5214	Intra to Pharmacy	85.71%	78.57%	100%	100%	100%			
5438	Introduction to Culinary Arts and Hospital	45.24%	40.48%	66.67%	100%	97.67%	84.62%		
5234	Network Fundamentals	45.16%	54.84%	95.65%	100%	96.77%	95.83%	10.34%	13.33%
5782	Precision Machining I	66.67%	66.67%	100%	100%	100%	100%	0%	0%
5784	Precision Machining II	40%	60%	100%	100%	90.91%			
5842	Recreational & Portable Power Equipme	0%	100%	-	100%	100%	66.67%		
5892	Trade and Industrial Cooperative Educat	-	-	-	-	-	100%		
5776	Welding Technology I	46.67%	53.33%	78.57%	100%	88.24%	85.19%		
5778	Welding Technology II	61.54%	53.85%	100%	100%	92.31%			



2011-2012 Final Student indicator Results by Program

DOE Number	DOE Code Name			2S1	3S1	4S1	5S1	SS1	6S2
		ement Lang	Achievement New-Math	Skills Attainment	(NCLB)	Graduate Follow Up	Participation	Non-Trad Completion	
Arts									
SALEM HIGH SCHOOL									
5070	Advanced Life Science: Animals (L)	-	-	-	-	-	100%		
5232	Interactive Media	100%	100%	-	100%	100%			
5056	Introduction to Agriculture, Food and N	-	-	--	-	-	-	33.33%	
5342	Nutrition and Wellness	-	-	-	-	-	100%	28.26%	
SCOTTSBURG SENIOR HIGH SCHOOL									
5340	Advanced Nutrition and Wellness	-	-	-	-	-	100%	41.67%	
5002	Agribusiness Management	0%	0%	100%	100%	100%	100%	37.50%	
5008	Animal Sciences	-	-	-	-	-	100%	65%	
5102	Food Science	-	-	-	-	-	-	47.06%	
5056	Introduction to Agriculture, Food and N	-	-	-	-	-	-	40.63%	
5136	Landscape Management	-	-	-	-	-	100%		
5342	Nutrition and Wellness	100%	0%	-	100%	-	100%	49.15%	
4814	Principles of Engineering PLTW	-	-	-	-	-	-	0%	
SILVER CREEK HIGH SCHOOL									
4826	(PLTW) Digital Electronics	75%	75%	-	100%	100%	100%		



2011m2012 CTE DASHBOARD REPORT : DISTRICT 45
 INDIANA DEPARTMENT OF WORKFORCE DEVELOPMENT

2011-12 Final Student Indicator Results by Program

DOE Code Number	DOE Code Name						5S1 Post	6S2 Non-Trad Completion
		1S1	1S2	3S1	4S1 (NCLB)			
SILVER CREEK HIGH SCHOOL								
4828	(PLTW) Engineering Design and Develo	-	-	-	-	-	100%	
5217	(PLTW) Medical Interventions	-	-	-	-	0%	100%	80%
5340	Advanced Nutrition and Wellness	-	-	-	-	-	83.33%	38.10%
4820	Civil Engineering and Architecture PLT	100%	100%	-	100%	100%		
5334	Consumer Economics	-	-	-	-	-	100%	
5698	Engineering Design and Development	--	-	-	-	-	100%	
5364	Interpersonal Relationships	0%	0%	-	100%	100%	100%	
4814	Principles of Engineering PLTW	-	-	-	-	-	-	0%
SOUTH CENTRAL JR & SR HS								
5008	Animal Sciences	-	-	-	-	-	-	45.45%
5132	Horticultural Science	-	-	-	-	-	-	100%
5056	Introduction to Agriculture, Food and N	-	-	-	-	-	-	40%
5342	Nutrition and Wellness	-	--	-	-	-	-	50%
5394	Preparing for College and Careers	0%	0%	-	100%	100%		

WILLIAM W BORDEN HIGH SCHOOL



2011-2012 CTE DASHBOARD REPORT : DISTRICT 45
 INDIANA DEPARTMENT OF WORKFORCE DEVELOPMENT

2011-2012 Final Student Ins:Ucator Results by Program

DOE	DOE	Name	1S1	1S2	2S1	3S1	4S1	5S1	6S1	6S2
Number			Academic Achievement New-Lang Arts	Academic Achievement New-Math	Technical Skills Attainment	Completion	Graduation (NCLB)	Follow Up	Non-Trad Participation	Non-Trad Completi
	WILLIAM W BORDEN HIGH SCHOOL									
5217	(PLTW)	MedicalInterventions	-	-	-	-	-	-	0%	
5240	Business Technology Lab I		0%	100%	-	100%	100%			
5244	Business Technology Lab II		100%	0%	-	100%	100%			
5362	Child Development		-	-	-	-	-	100%		
5394	Preparing for College and Careers		81.82%	100%	100%	100%	-	100%		



Remediation³

Type of Remediation	AVD#45 2010 2011 Graduates	2010-2011 Statewide CTE Graduates	All Post Secondary First Time Entries 2010-2011	AVD #45 2010-2011 CTE Graduates	2009-2010 Statewide CTE Graduates	All Post Secondary First Time Entries 2009-2010
Math Only	16%	16.21%	27.16%	9.67%	13.19%	26.33%
English Only	9.43%	9.44%	13.88%	5.54%	7.81%	12.40%
Both Math and English	7.71%	6.99%	9.44%	4.49%	6.26%	8.65%
Either Math or English	17.71%	18.65%	31.60%	10.71%	14.74%	30.07%

3. Data received from InTers and The Commission for Higher Education. Remediation is any student that takes at least one hour of a remedial course.

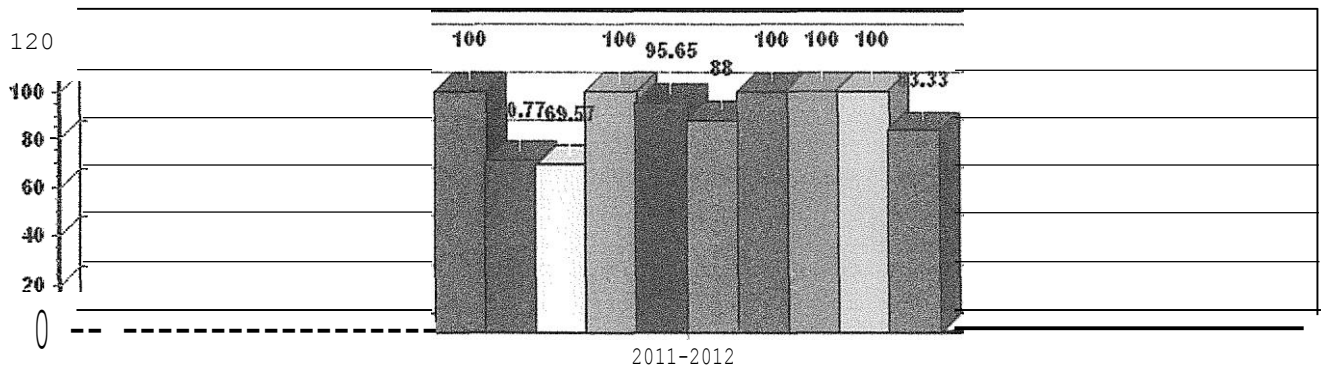


2011a2012 CTE DASHBOARD REPORT DISTRICT 45
 INDIANA DEPARTMENT OF WORKFORCE DEVELOPMENT

District Ranking by Indicator

State Rank	151 Academic Achievement New-Lang Arts	152 Academic Achievement New-Math	251 Technical Skills Attainment	351 Completion	451 Graduation (NCLB) (*)	551 Graduate Follow Up	651 Non-Trad Participation	652 Non-Trad Completion
35	29	38	25	19	30	37	11	12

Technical Skills Assessment Results by Assessment Type



- ||||| Certified Nurse Aide
- ||||| Dual Credit
- c:::J Certified Food Handler (through ServSafe Certification-Indiana Restaurant and Hospitality Association)
- ||||| State Board of Cosmetology
- ||||| A Plus Certification
- f|||| American Welding Society (AWS) Certification
- ||||| Aircraft Operator-Private Pilots License
- f#i!!! Welding
- c:::J Pharmacy Technician
- ||||| CWI (Certified Web Professional)



2011-2012 CTE DASHBOARD REPORT DISTRICT45
 INDIANA DEPARTMENT OF WORKFORCE DEVELOPMENT

Placement By School

School Code		DOD	Secondary	Not Placed
7629	AUSTIN HIGH SCHOOL	100.00%		
0821	CHARLESTOWN SENIOR HIGH SCH	46.15%	13.85%	40.00%
0833	CLARKSVILLE SENIOR HIGH SCH	100.00%		
2640	CORYDON CENTRAL HIGH SCHOOL	66.67%	16.67%	16.67%
1059	CRAWFORD COUNTY JR-SR HS	87.50%		12.50%
8905	EASTERN HIGH SCH	100.00%		
1930	FLOYD CENTRAL JR-SR HIGH SCH	68.13%	23.08%	8.79%
0765	HENRYVILLE JR & SR HIGH SCH	50.00%		50.00%
0849	JEFFERSONVILLE HIGH SCHOOL	85.71%	14.29%	
2613	LANESVILLE JR-SR HS	100.00%		
1925	NEW ALBANY SENIOR HIGH SCHOOL	50.00%	20.00%	30.00%
0809	NEW WASHINGTON HIGH SCHOOL			100.00%
1990	PROSSER CAREER EDUCATION CENTER	76.65%	11.68%	11.68%
8857	SALEM HIGH SCHOOL	100.00%		
7641	SCOTTSBURG SENIOR HIGH SCHOOL	83.33%	16.67%	
0777	SILVER CREEK HIGH SCHOOL	76.47%	17.65%	5.88%
0813	WILLIAM W BORDEN HIGH SCHOOL	75.00%	25.00%	



2011-2012 CTE DASHBOARD REPORT : DISTRICT 45
INDIANA DEPARTMENT OF WORKFORCE DEVELOPMENT

Placement
Results

